



# GAT MONTHLY MEMBERSHIP PROGRESS REPORT

Results as of: 9/30/2022

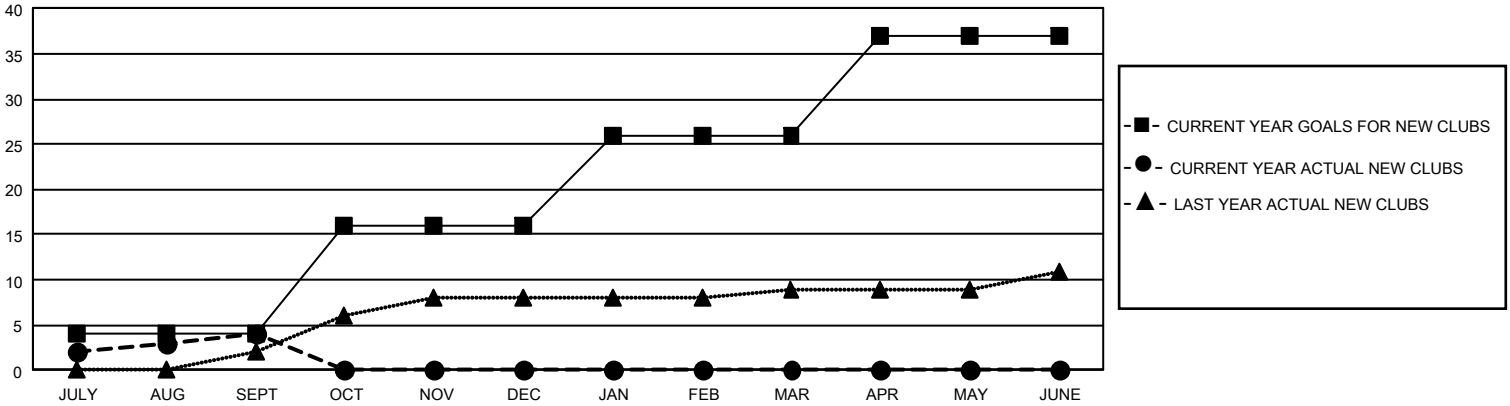
## GAT Constitutional Area 2

REPORT DOES NOT INCLUDE CLUBS IN UNDISTRICTED AREAS.

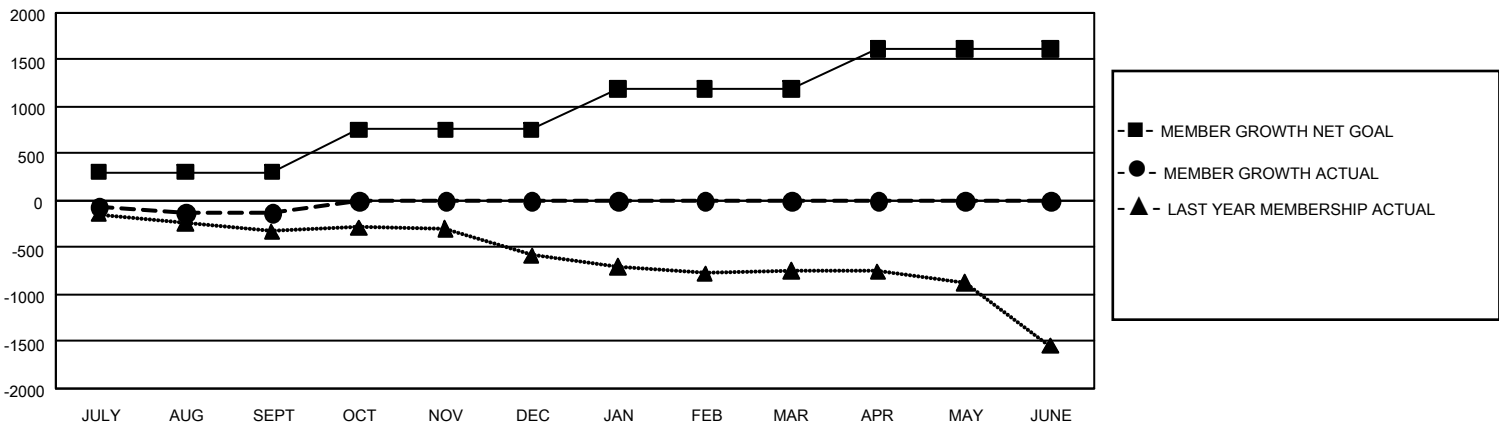
Clubs			
RESULTS FOR 2022-2023			
QUARTER	NEW CLUB GOAL	NEW CLUBS	DROPPED CLUBS
JULY/AUG/SEPT	12	4	5
OCT/NOV/DEC	36	0	0
JAN/FEB/MAR	30	0	0
APR/MAY/JUNE	33	0	0

Members			
RESULTS FOR 2022-2023			
QUARTER	MEMBER GROWTH NET GOAL	MEMBER GROWTH ACTUAL	DROPPED MEMBERS ACTUAL (including transfers)
JULY/AUG/SEPT	306	618	652
OCT/NOV/DEC	450	0	0
JAN/FEB/MAR	438	0	0
APR/MAY/JUNE	426	0	0

GOALS AND ACTUAL NEW CLUBS CUMULATIVE



GOALS AND ACTUAL MEMBERS CUMULATIVE



<b>DROPPED CLUBS: 5</b>	190 CLUBS OF 1,252 ADDED 1 OR MORE NEW MEMBERS  <a href="#">CLICK HERE FOR CUMULATIVE MEMBERSHIP DATA</a>	<b>GENDER DISTRIBUTION</b>	
		MALE 17,585 (65.77%) FEMALE 9,152 (34.23%) NON BINARY 1 (0.00%) PREFER NOT TO ANSWER 1 (0.00%)	TOTAL FAMILY UNIT MEMBERS 4,811 FAMILY MEMBERS PAYING HALF DUES 2,470
<b>DROPPED MEMBERS</b>			
DECEASED	104		
CLUB CANCELLED	0		
OTHER	548		
<b>TOTAL</b>	<b>652</b>		